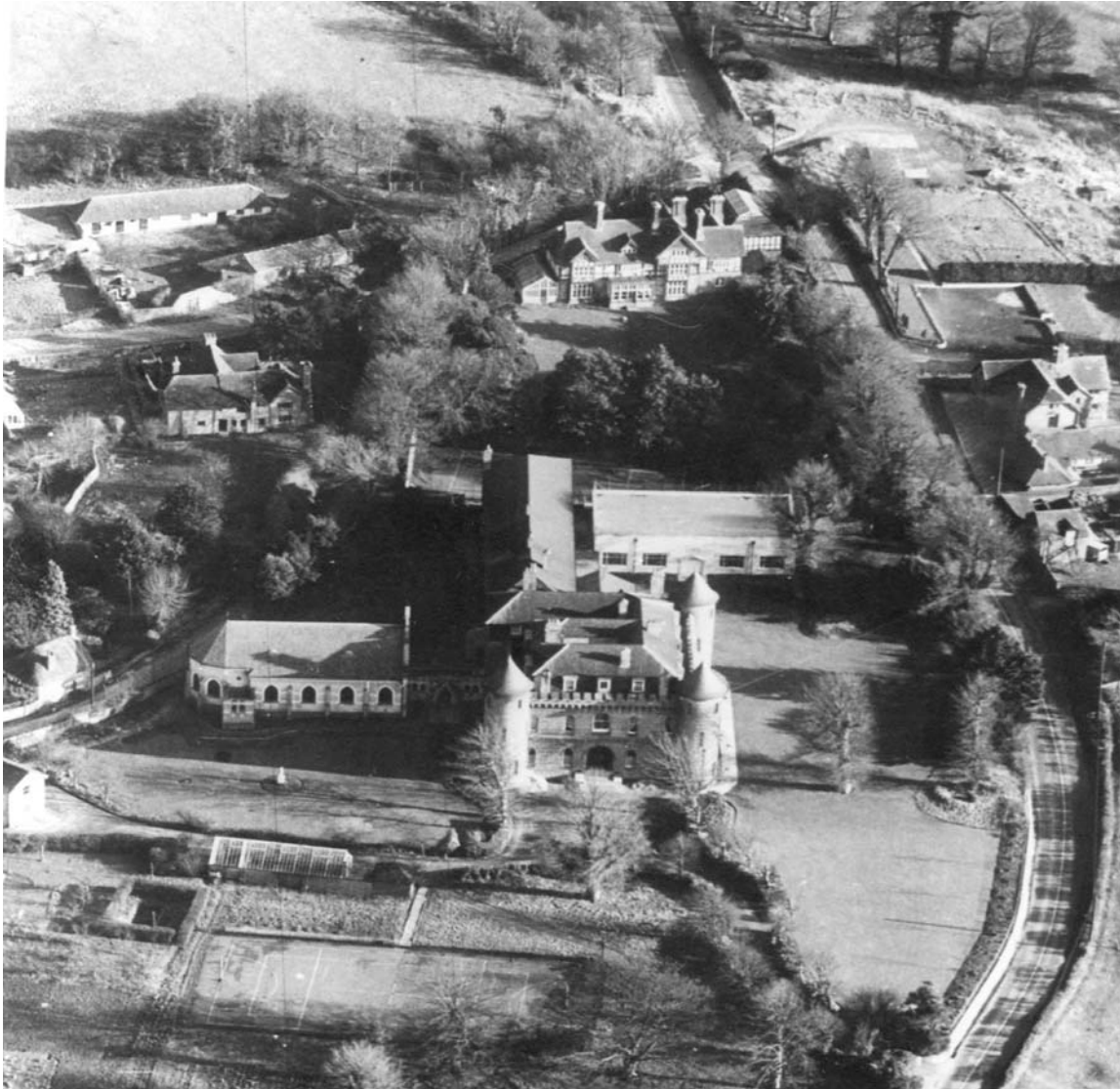


# The Towers Convent

Compiled by Pat Nightingale

The original part of The Towers was completed in 1873. The attached aerial view looks south east along the Henfield Road. In the foreground is part of plot no. 419, but most of the open area belongs to plot nos. 417 and 418. It also shows in the top left-hand corner, the farm buildings of Mains Farm and Mains Farm House (plot no. 404) at centre-left. Hyde Street can just be seen to the left of the chapel and then runs out of sight between the trees, curving to the right behind Sele Court to meet the Henfield Road.



*Aerial view of Towers 1954*

The Towers Convent is now a Grade II listed building.

There is more information about the Towers in Chapter 13 of the booklet "*Beeding - History of a Village*" and in Sister Mary Andrew's book "*The Towers Convent - the first hundred years or so*".



*Gateway, Hyde Street*